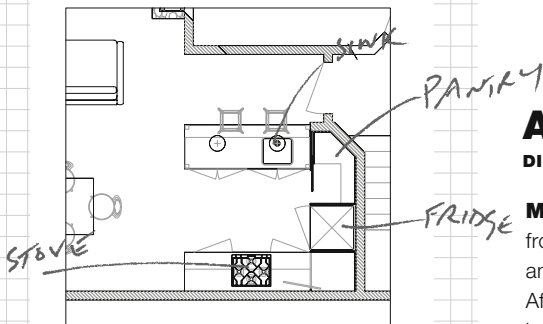
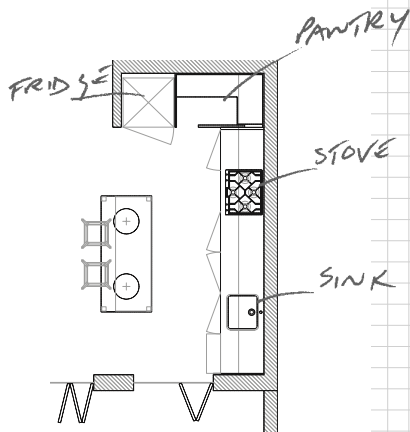


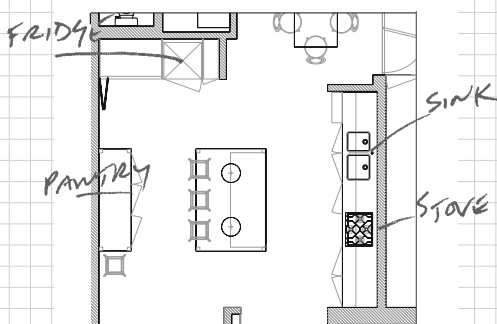
FLOORPLANS



**ANDREW'S SMALL,
SQUARE KITCHEN
LAYOUT IDEA**



**ANDREW'S LONG,
RECTANGULAR KITCHEN
LAYOUT IDEA**



**ANDREW'S STANDARD-SIZED
KITCHEN LAYOUT IDEA**

ANDREW WALLER

DIRECTOR Andrew Waller Design. Mrwaller.com

MEET ANDREW, who graduated with a BA (Hons) Architecture from the Liverpool John Moores University, UK, and was awarded an Art in Architecture prize for outstanding design concept. After graduating, Andrew relocated to Australia, where in 2003 he established his Sydney-based boutique design practice. Specialising in interior architecture and design and furniture design, he has been able to combine multidisciplinary skills and experience.



DESIGN STATEMENT "It's a modern, Australian, beach-inspired kitchen," Andrew says of his fresh, slightly industrial but warm kitchen design, *left*. "The design references traditional Australian weatherboard beach houses and the relaxed lifestyle, with built-in 'utilitarian' wall joinery detailed with vertical 'V' joint doors, an off-white stone bench and a tiled splashback," he continues. "Contrasting loose 'furniture' pieces, including the island bench and the pantry

cupboard, have been highlighted in a dirty soft blue tone with oak timber benchtop, set against washed timber flooring."

LOVE ANDREW'S KITCHEN LOOK?

Discover his suggested finishes, fittings and appliances that would work in this style of kitchen. Check out his three floorplans, too, for different-sized and shaped kitchens. Then turn the page for more designers' varied kitchen styles and useful suggestions. →

FITTINGS & APPLIANCES



GET ANDREW'S LOOK **PENDANT** Emac & Lawton "Brassiere" in White (1), \$220, Interiors Online. **FRIDGE** RF522WDRX4 519L ActiveSmart Door Drawer in Stainless Steel (2; 790mm), \$2099, Fisher & Paykel. **TAP** MT2030 Mito essential gooseneck mixer in Chrome (3), \$429, Oliveri. **SINK** PR1180U Professional Series single bowl undermount (4), \$829, Oliveri. **OVEN** SCA709X Classic Thermoseal (5), \$3490, Smeg.

INSPIRATION

"THIS IS A CERAMIC SCULPTURE BY THE AUSTRALIAN ARTIST JOANNE SEARLE," ANDREW SAYS OF HIS INSPIRATION FOR THE KITCHEN DESIGN. "THE IMAGE DESCRIBES THE RELAXED BEACH AESTHETIC, AND COLOURING/TEXTURES WE DERIVED FOR THE SCHEME."

MATERIALS

CLOCKWISE FROM TOP LEFT
 Easycraft "EasyVJ" primed
 MDF interior **wall lining**
 (for cabinet fronts), \$58.98
 for 2.4m x 1.2m, Bunnings;
 painted in Dulux Wash & Wear
paint in Cool, \$89.45 for 4L.
 Europlank European Oak
flooring in Ice White, \$98
 a sq m (supply only),
 Havwoods. **Caesarstone**
 Classico in Frosty Carrina
 (for benchtop), \$750 a sq m
 (installed), Caesarstone.
 Castella "Cup Pull" **handle**
 in Satin Nickel, \$6.50 each,
 Furnware. Abbey **tile** in Gloss
 White Bevelled, \$61.50 a sq m,
 Skheme Tiles. European Oak
timber (for island benchtop),
 \$352 a lineal m (600mm wide),
 Dale-Glass Industries. Castella
 "Plain Knob" **handle** in Satin
 Nickel, \$6.50 each, Furnware.
 IN PICTURE Pacific Round
 and Square **barstools** in
 Natural, \$283.80 each,
 Cafe Culture + Insitu.

